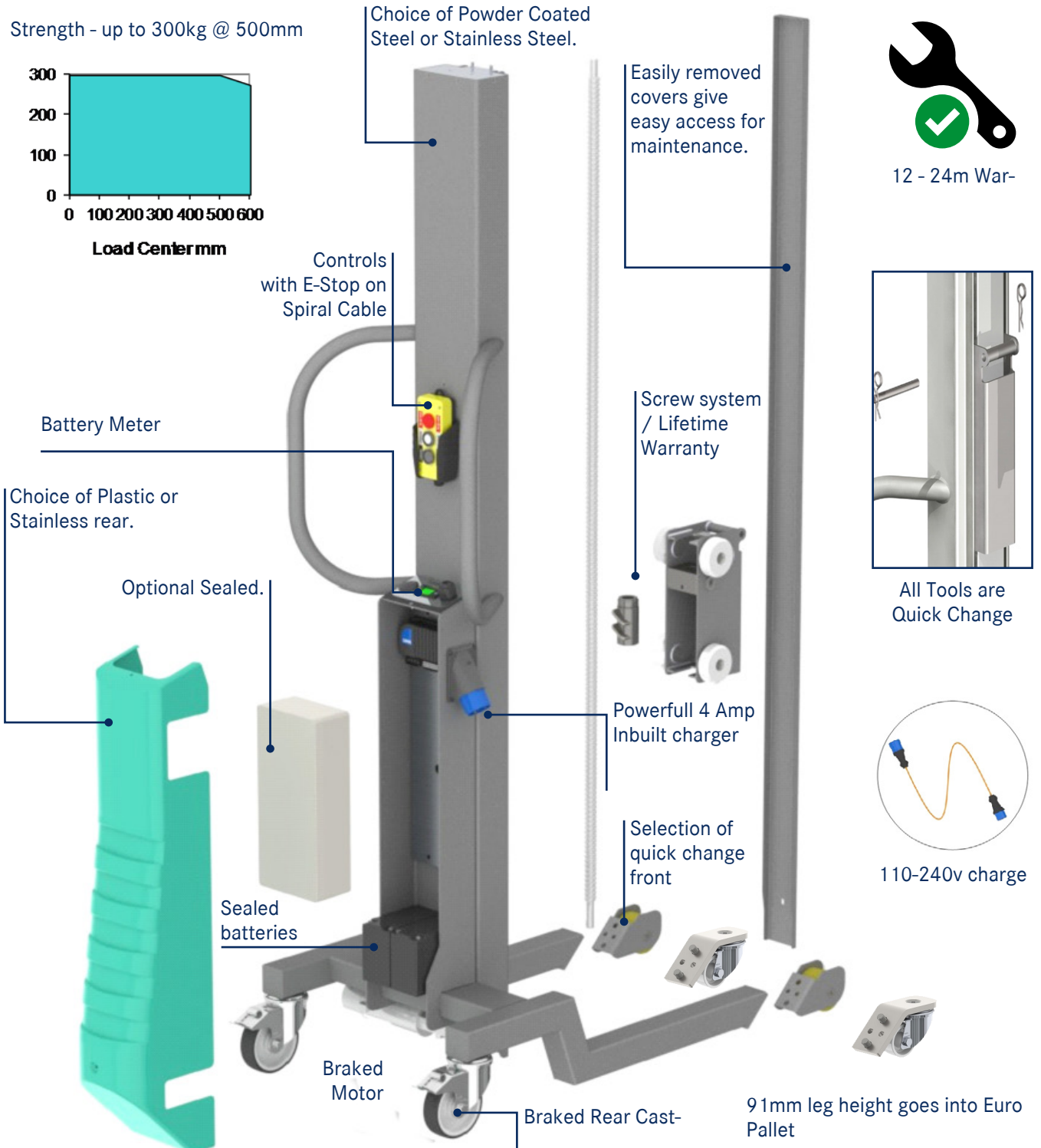


## Pneumatic and vacuum manipuladors

Lift manipulators

## Sales Features

High Quality components give long life and security.  
For example, Precision Ball Screw, Bickler Wheels, Curtis electrics



# Lift manipulators

## Explanation of Multilift Parts Systems

To specify a Multilift you build your own by choosing the parts you want. Each part has an Article No. Starting with the letters "FA." Each FA Article No has Data Sheet giving full information about the part.



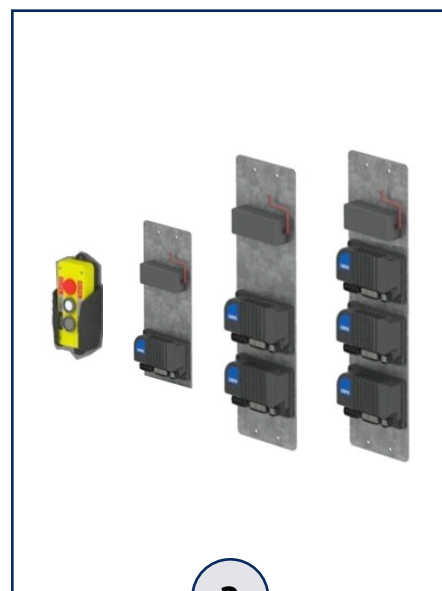
1

Select a chasis by size and material  
(**Steel or Stainless**).  
**Articles FA1001-1003**



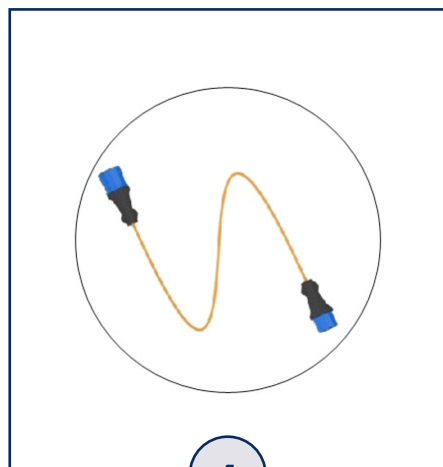
2

Select Front Wheels:  
**Articles FA1020-1024**



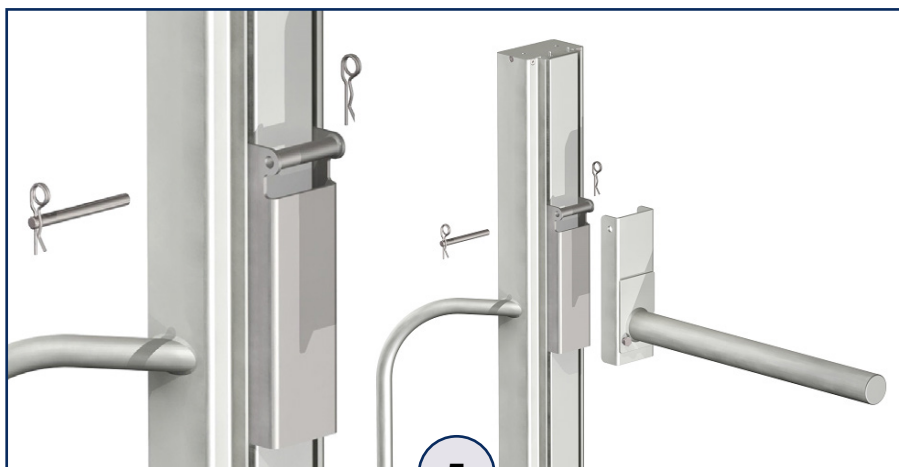
3

Select Electrics:  
**Articles FA1030-1039**



4

Select Charge Lead:  
**Articles FA1040-1047**



5

Select one or more Quick change Tools: **Articles FA1100 - FA1310**  
ALL of the Tools are quick change.

## Ref. FA1001-2

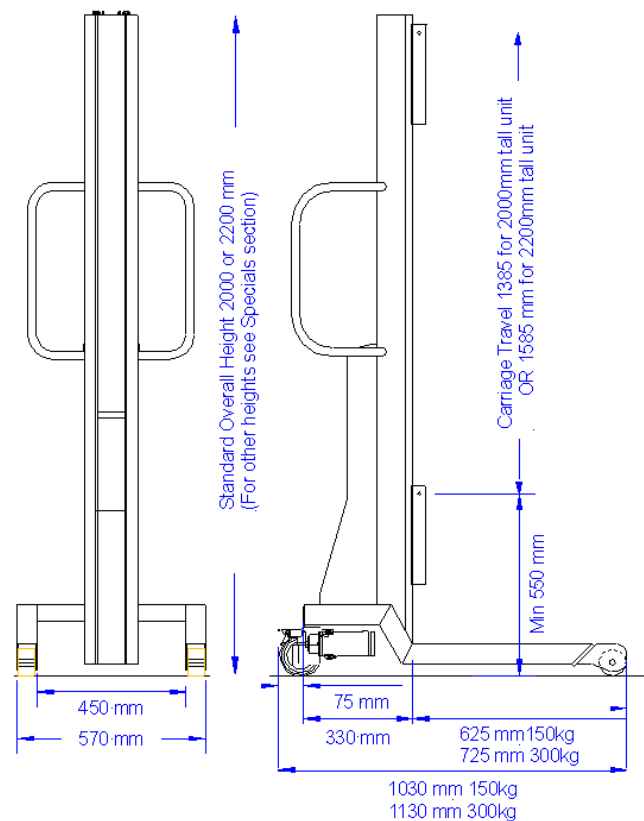
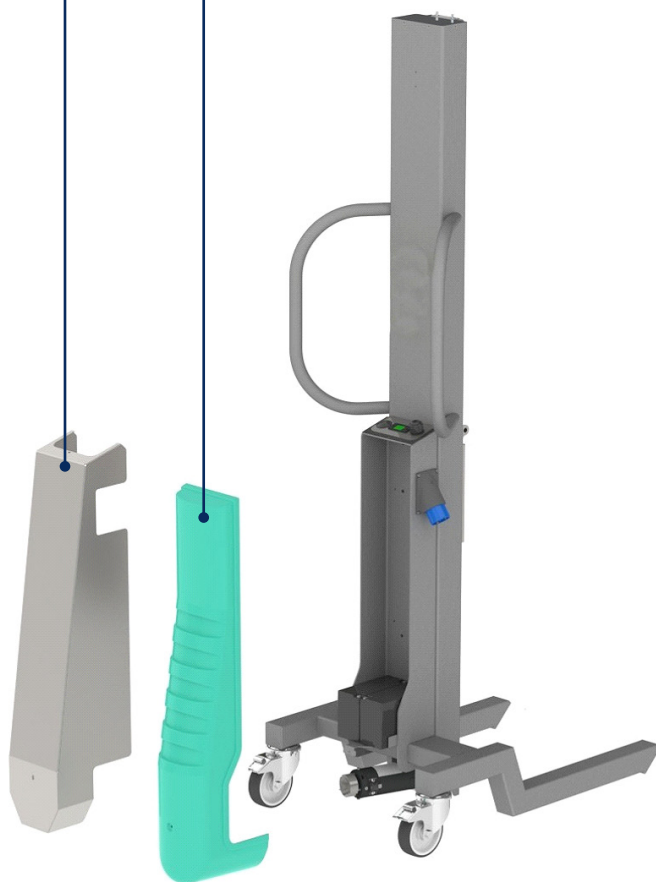
**FA1001:** Stainless Chasis Satin Finish.

**FA1002:** Steel Chasis, Powder coated RAL7031 Grey.

Ref.	Material	Dimensions
FA1001-150-2000	Stainless	H 2000 x W 570 x L 625
FA1001-150-2200	Stainless	H 2200 x W 570 x L 625
FA1001-300-2000	Stainless	H 2000 x W 570 x L 725
FA1001-300-2200	Stainless	H 2200 x W 570 x L 725
FA1002-150-2000	Steel	H 2000 x W 570 x L 625
FA1002-150-2200	Steel	H 2200 x W 570 x L 625
FA1002-300-2000	Steel	H 2000 x W 570 x L 725
FA1002-300-2200	Steel	H 2200 x W 570 x L 725

Stainless Covers are standard on Stainless machines

ABS plastic covers are standard on Steel Machines in Blue RAL 5005

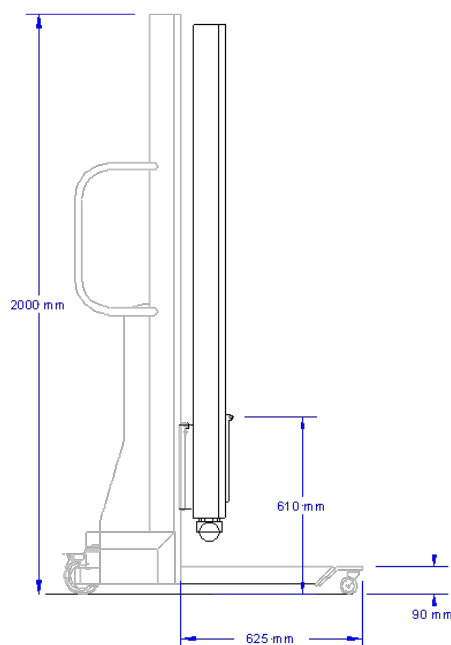
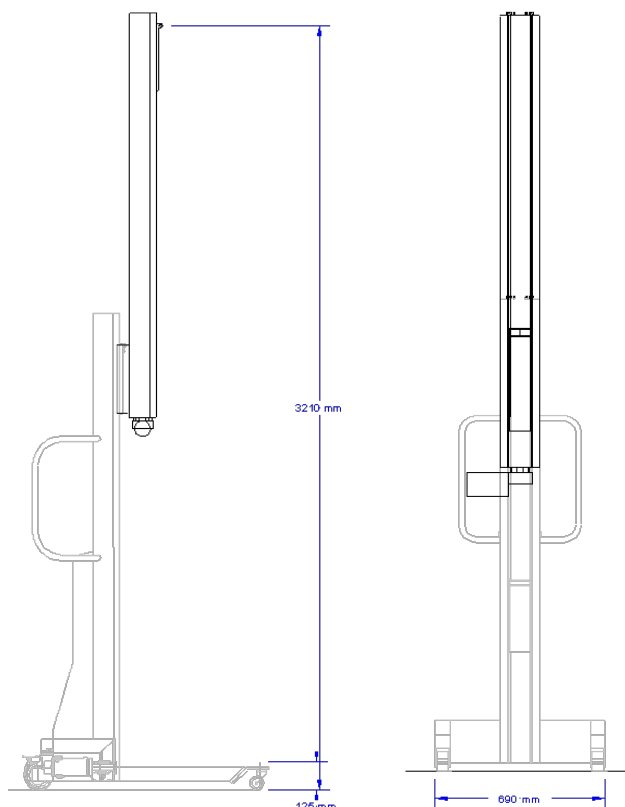


# Telescopic mast

## Ref. FA1003

This Part No. covers only the additional mechanical components required to create a telescopic version. Therefore please continue to select the main lifter Chasis, the correct electrics, front wheels, etc in the normal way.

The telescopic mast is only available in stainless steel but can be added to either steel or stainless steel lifters. Tool moves up first followed by the second mast. Second mast lowers first followed by the tool. MAX 100kg.

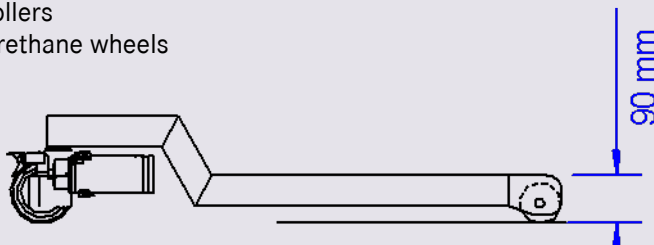


## Ref. FA1020-24



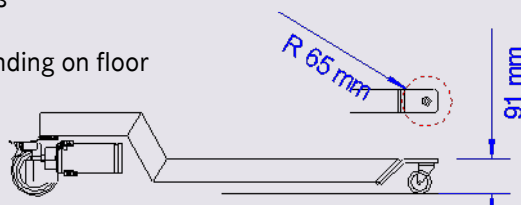
### FA1020

80mm Dia Pallet Rollers  
Non-Marking Polyurethane wheels  
Ball Bearings  
Max 300kg



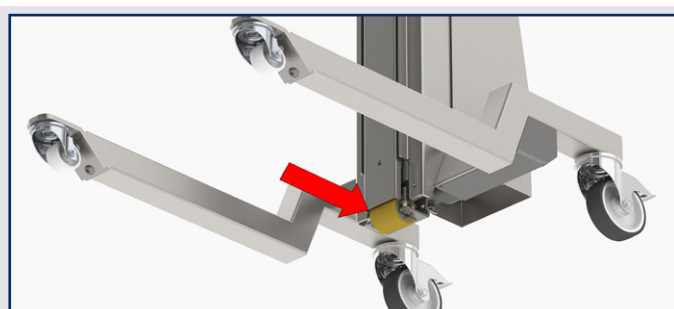
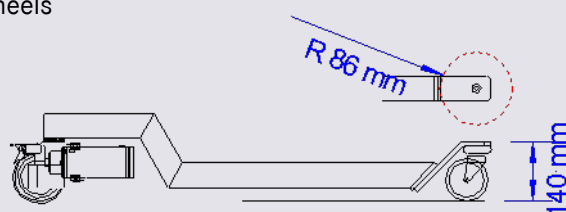
### FA1021

60mm Dia Swivel Casters  
Non-Marking White Nylon wheels  
Plain Bearings  
Max Recommended 150kg depending on floor  
Max 300kg



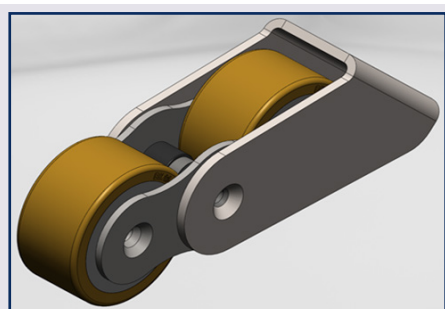
### FA1022

100mm Dia Swivel Casters  
Non-Marking White Nylon wheels  
Ball Bearings  
Max 300kg



### FA1023

An optional 5th Wheel can be fitted when the lifter has 4 swivel casters in order to give good directional control especially when turning corners.  
The 5th wheel is a sprung loaded pallet wheel and it is fitted out of the way under the mast.



### FA1024

80mm Dia Pallet Rollers  
Max 150kg





## Ref. FA1030-38

All Multilifts have electric lift. If this is the only motorised part of your machine then you only need the Single Drive electrics, which are shown on this page. If you require 2 motors (for example lift AND a tool with a single motor, (for example a clamp,)) then you need a Dual Drive panel FA1034. See next page. If you require 3 motors (for example lift AND a tool with a two motors, (for example a Clamp with Rotation,)) then you need a Triple Drive panel FA1035. See next page. All electrics have Soft Start Motion are programmable if you have a hand Programmer.

### Single drive panels and options - for up / down only



#### FA 1030. Single Drive Electrics - UP/DOWN

Single Drive electrics give Lift Function only (Up/Down.)  
This is for machines where the tool has no motor and is not Telescopic



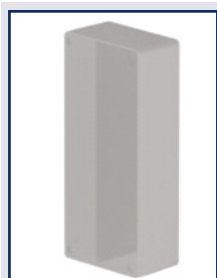
**FA 1031**  
Standard Controls



**FA 1032**  
With Speed Control

#### FA1031 and FA132. Controls for Single Drive Electrics

Single Drive units (only,) are available with Standard Controls on a Cable, or with an additional Speed Control Dial where extra precision is required.



#### FA1033. Water Proof Box - For Single Drive Electrics only

Single Drive Units ONLY the panel can be fitted inside a waterproof box to give protection of IP65 equivalent. It is not available for other panels because they are too big to fit into the box.

## Ref. FA1030-38

The electrics on this page are for units which have extra motors, for a the tool or a telescopic mast.



### FA 1034 Dual Drive Electrics

Up / Down Lift Function + 1 extra Motor Controller  
For tools with 1 motorised function.  
Controls are included. There is no Speed Control option.  
Safety release (requiring 2 buttons / 2 hands to release) is Standard.



### FA 1035 Triple Drive Electrics

Up / Down Lift Function + 2 extra Motor Controllers  
For tools with 2 motorised functions.  
Controls are included. No Speed Control option.  
Safety release (requiring 2 buttons / 2 hands to release) is Standard.



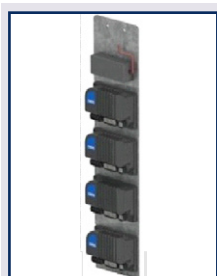
### FA 1036 - Buzzer Alarm for Tools with Grip

Optional Alarm for Tools with motorised grip.  
Alarm sounds when grip is engaged / fully disengaged.



### FA 1037 - For Telescopic Units with non motorised tool

Up / Down electrics give Lift Function only (Up/Down.)  
This is for machines where the tool has no motor.  
Standard Controls are included.  
No Speed Control Option



### FA 1038 - For Telescopic Units with motorised tool

Up / Down Lift Function + 2 extra Motor Controllers  
For tools with 2 motorised functions.  
There are a total of 4 motor controllers on this panel.  
Controls are included. No Speed Control option.  
Safety release (requiring 2 buttons / 2 hands to release) is Standard.

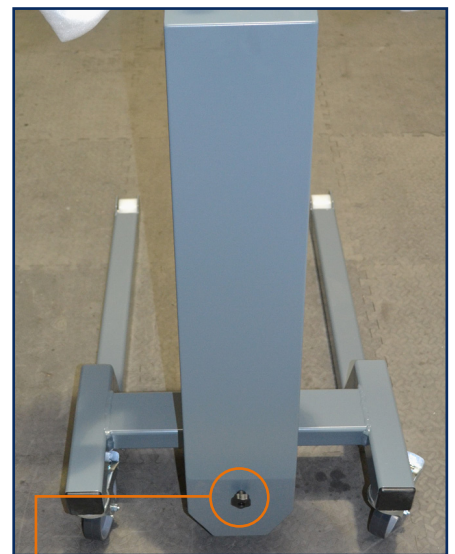


# Extra batteries

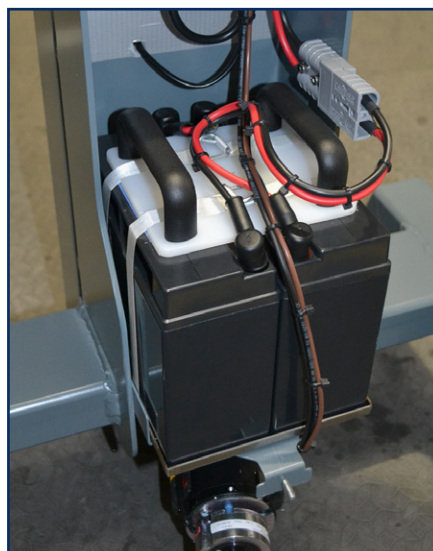
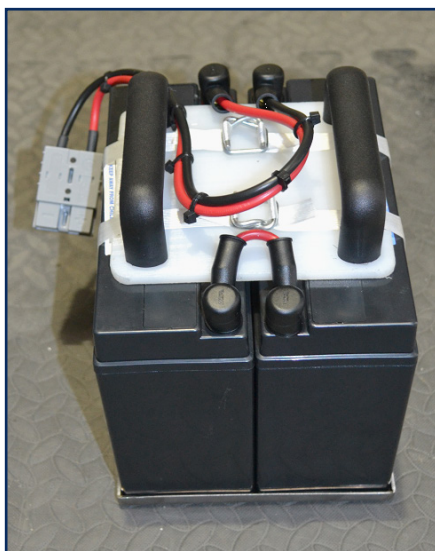
## Ref. FA1039-B

If extra batteries are needed, we can offer 2 portable battery packs on a quick release plug. The can then be external so that while one pack is in use the other is on charge.

- 2 Sets of batteries (each set 2 x 20Amp Hour 12v, Sealed)
- Quick release cover on just 1 screw
- Batteries connect with a quick release plug
- Separate External 4 Amp Charger



Just 1 screw.



## Ref.s FA1040-47

All cables are 2 meters long.



**FA 1040**

UK - 240v Blue to Blue Industrial Plug for Stainless Steel



**FA 1041**

UK - 240v Blue to UK 3 Pin Plug - for Stainless Steel lifter



**FA 1042**

UK - 110v Yellow to Yellow Industrial plug - for Stainless Steel lifter



**FA 1043**

Euro - C13 to Ceep 17 2 Pin Plug - for Painted lifter



**FA 1044**

US - Blue to US 2 Blade Plug - for Stainless Steel lifter



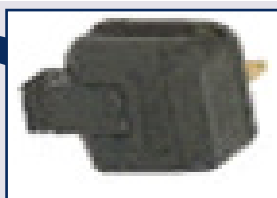
**FA 1045**

Euro - 240v Blue to Ceep 17 2 pin - for Stainless Steel lifter



**FA 1046**

UK - C13 to 3 Pin Plug- for Painted lifter

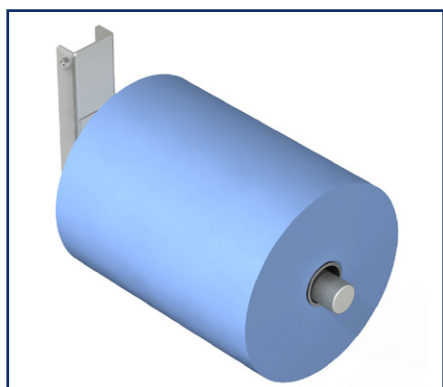


**FA 1047**

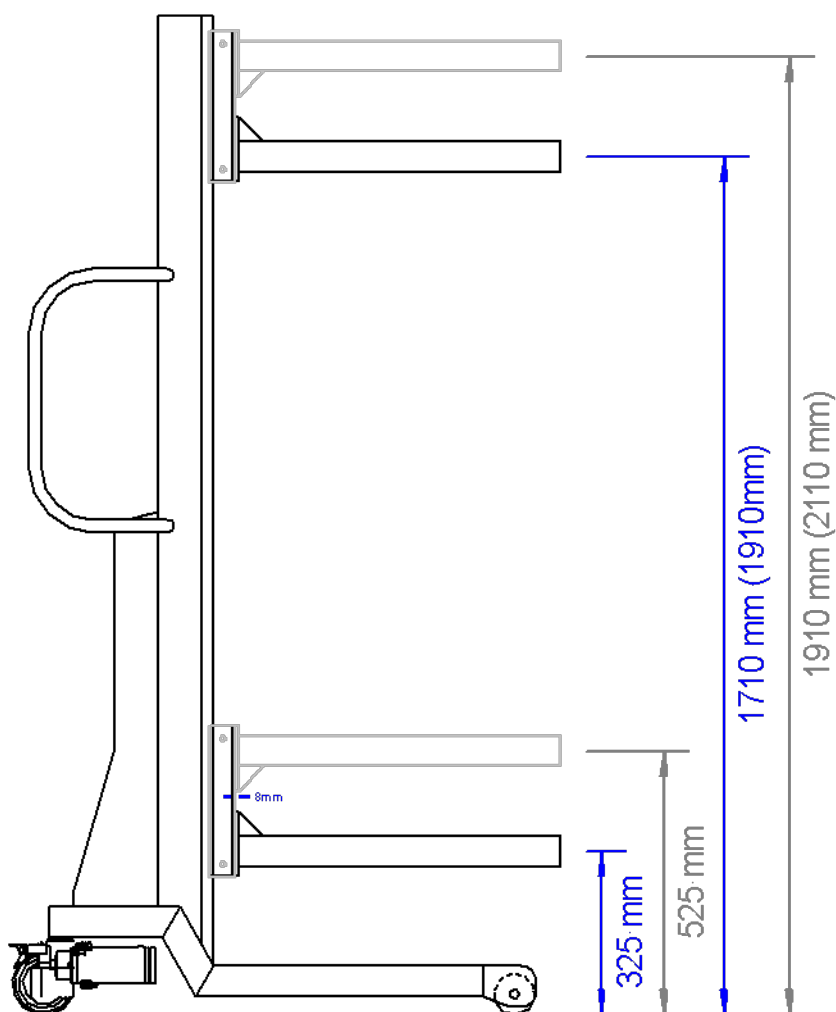
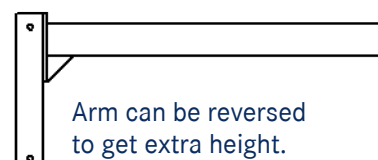
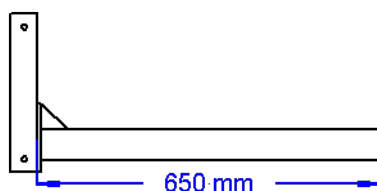
US - C13 to US 2 Blade Pin - for Painted lifter

# Single arm

**Ref. FA1100**

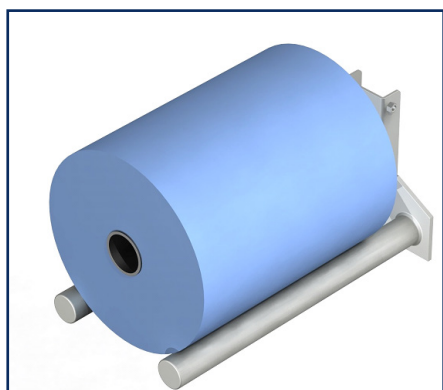


Model	Capacity	Material	Weight
FA1110	150 Kg.	Inox	15 Kg.
FA1111	300 Kg.	Inox	15 Kg.

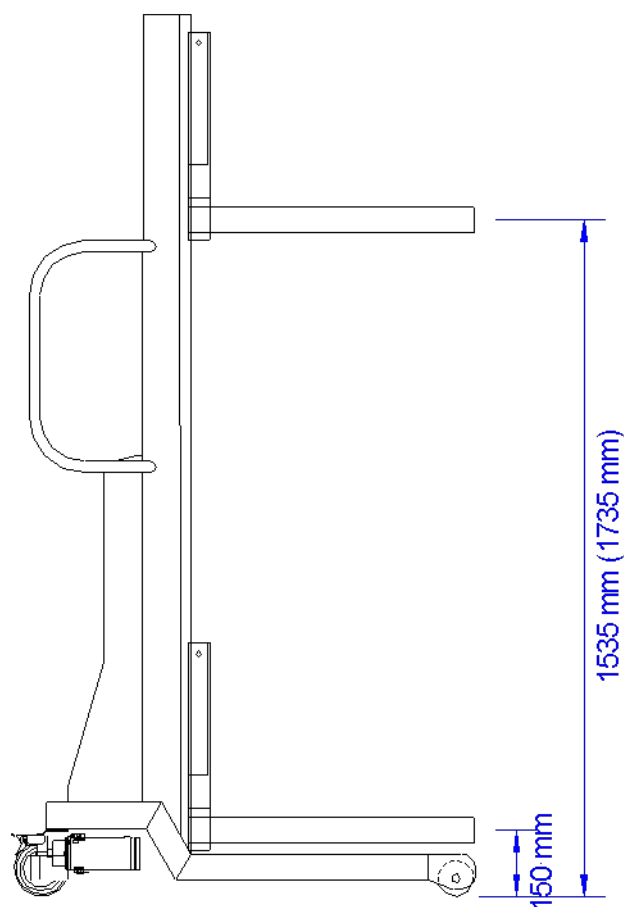
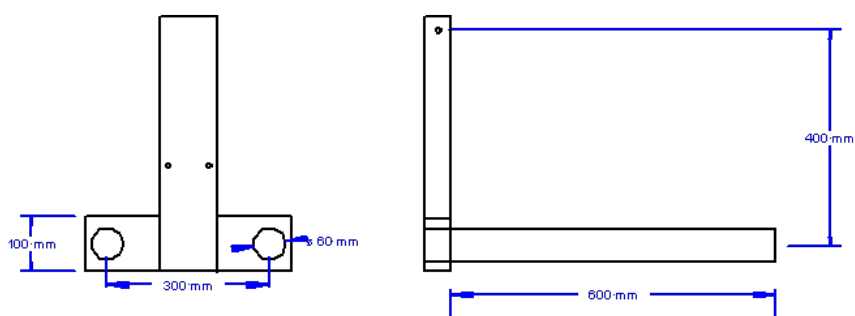


Main Dimensions are for the 2000mm tall lifter. Dimensions for the 2200m tall lifter are shown in brackets

**Ref. FA1110**



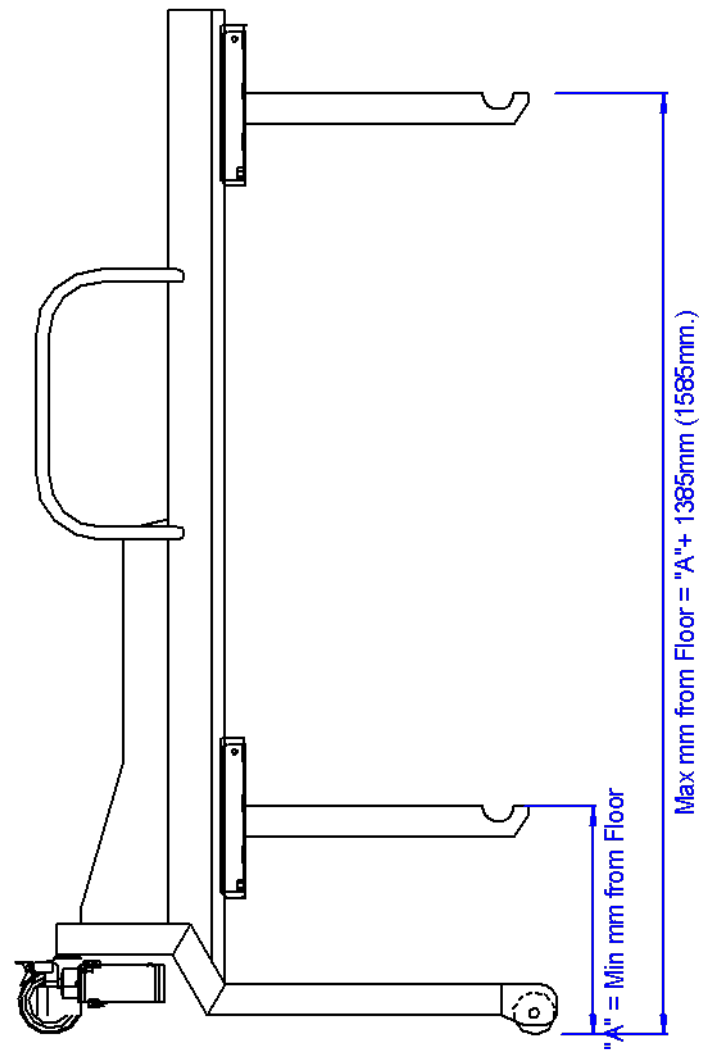
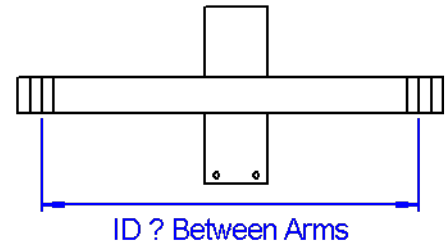
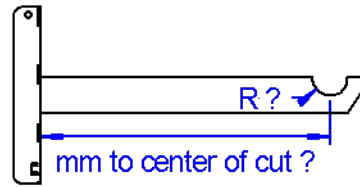
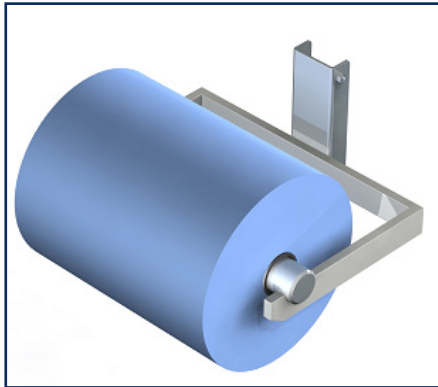
Model	Capacity	Material	Weight
Twin Arm	300 Kg.	Inox	15 Kg.



Main Dimensions are for the 2000mm tall lifter.  
Dimensions for the 2200m tall lifter are shown  
in brackets

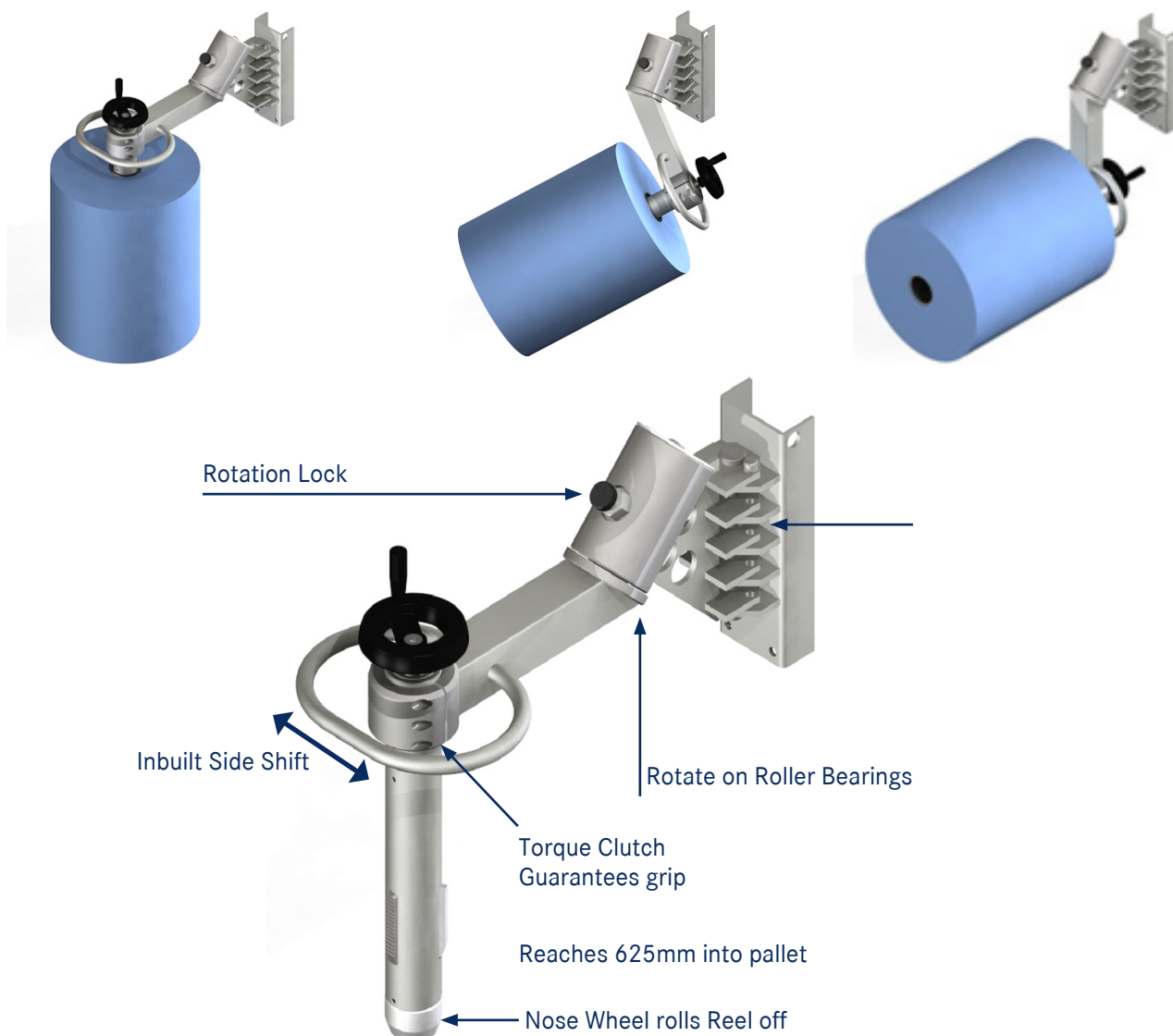
# Cradle

Ref. FA1120



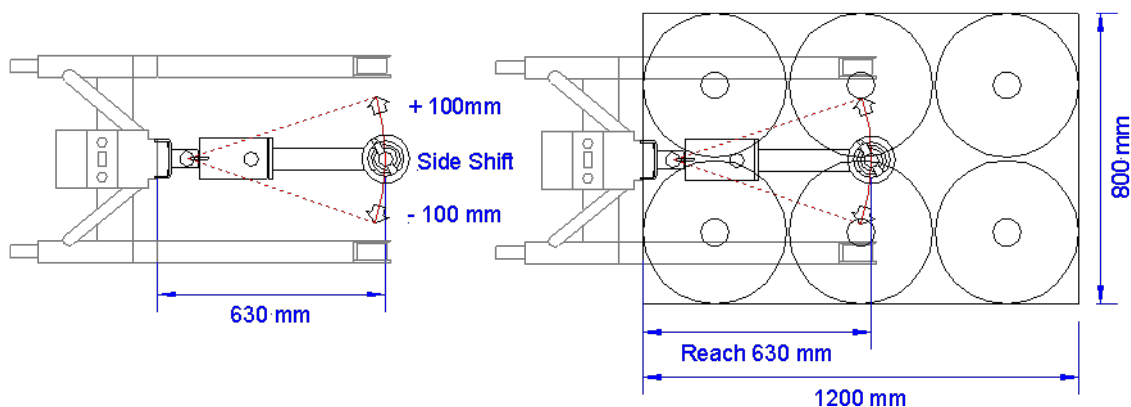
Main Dimensions are for the 2000mm tall lifter.  
Dimensions for the 2200mm tall lifter are shown  
in brackets

Ref. FA1130-39



**Side shift for easy picking**

**Reach into pallet more than 1/2 way**

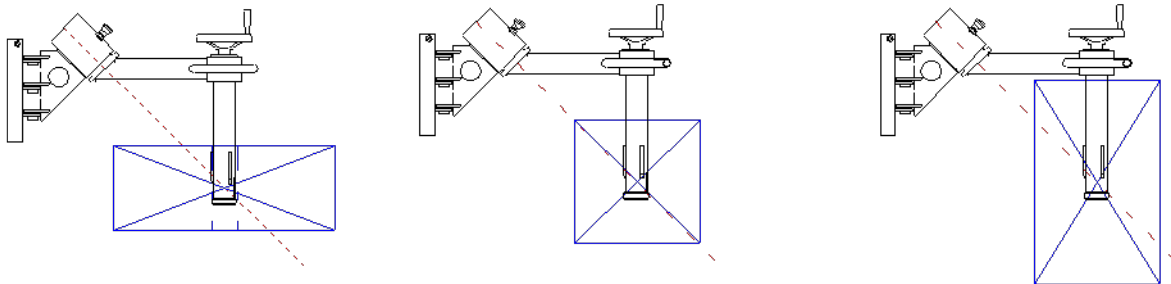




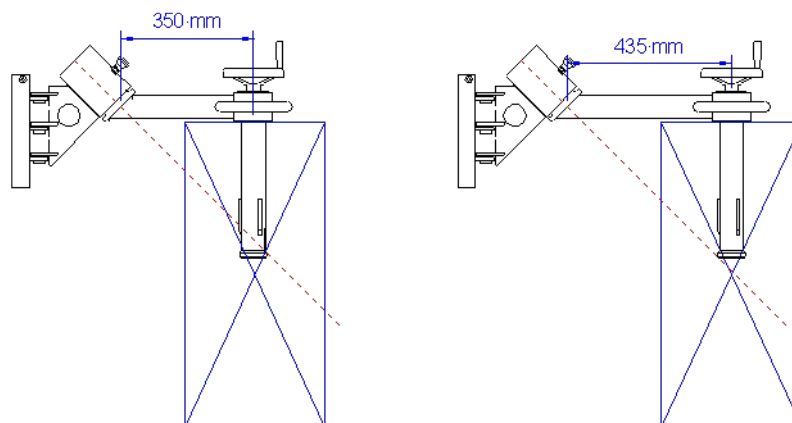
# Roll turner

## Rotation - No effort - How it works - Balance

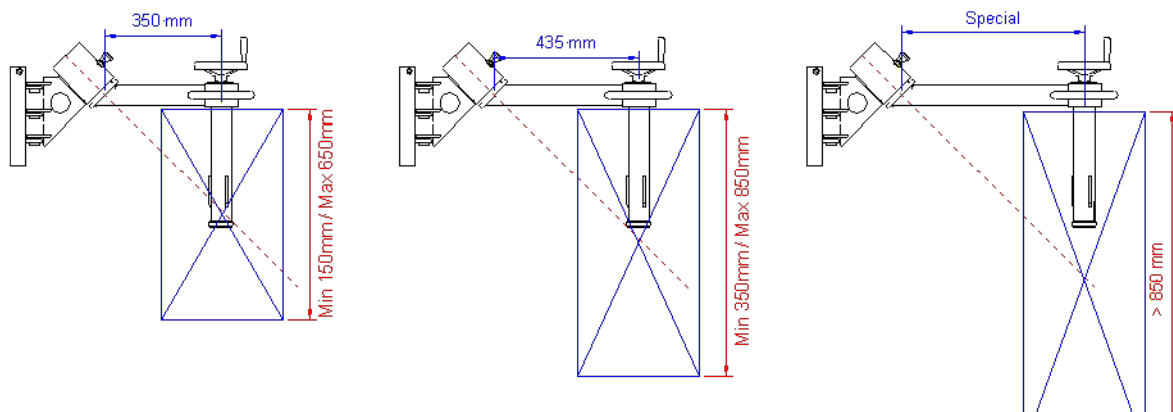
It is essential that for easy turning of the roll, it must always be in balance. This means that the center of the roll must be on the 45 degree axis line, as demonstrated below by the Red dotted line.



As a roll becomes wider, it must use a longer Box Arm to stay in balance. VINCA offers 2 standard lengths of Box Arm, 350mm and 435mm which cover most roll sizes.

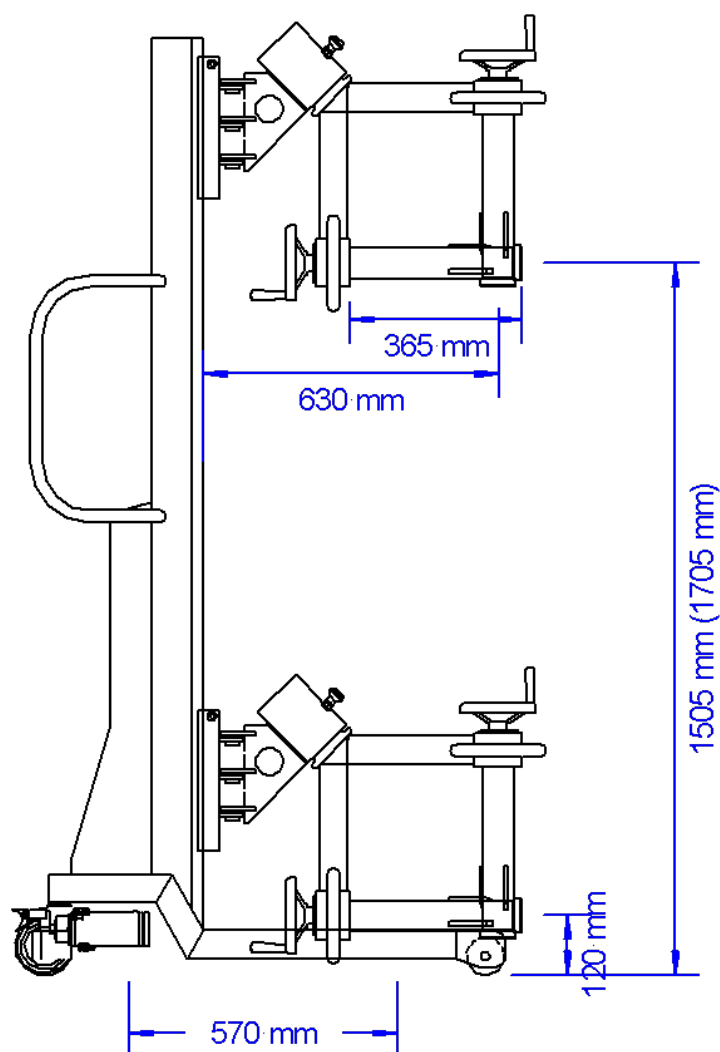


## Summary



## Ref.s FA1130-39

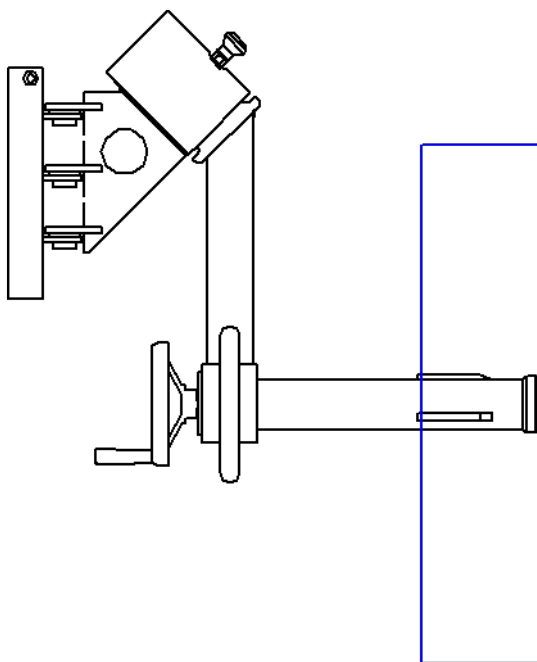
Ref.	Material	Core Size	Box Length	Type
FA1130	SS	76	350	Manual
FA1131	SS	76	435	Manual
FA1132	MS	76	350	Manual
FA1133	MS	76	435	Manual
FA1134	SS	152	350	Manual
FA1135	SS	152	435	Manual
FA1136	MS	152	350	Manual
FA1137	MS	152	435	Manual
FA1138	MS	76	350	Electric Grip
FA1139	MS	76	350	Electric Grip & Rotation
FA1142	SS	76	350	Electric Grip
FA1143	SS	76	435	Electric Grip & Rotation



Main Dimensions are for the 2000mm tall lifter.  
Dimensions for the 2200m tall lifter are shown  
in brackets

# Support sleeve

Ref. FA1140

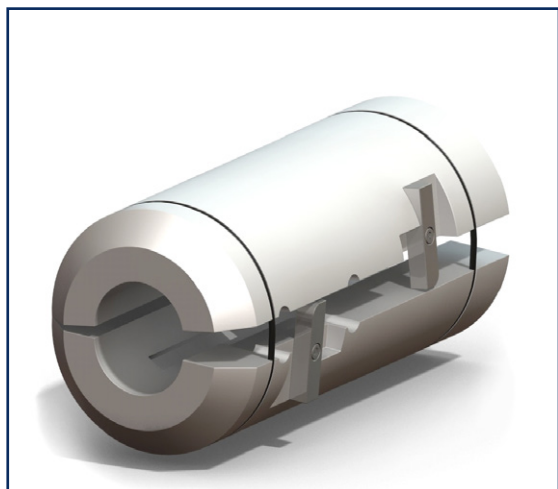


Thin rolls like the one below are supported.  
Better by the support sleeve.

Tel: (+34) 93 635 61 20 - [info@vinca.es](mailto:info@vinca.es) - [www.vinca.es](http://www.vinca.es)

## 76mm - 152mm core adaptor

Ref. FA1141

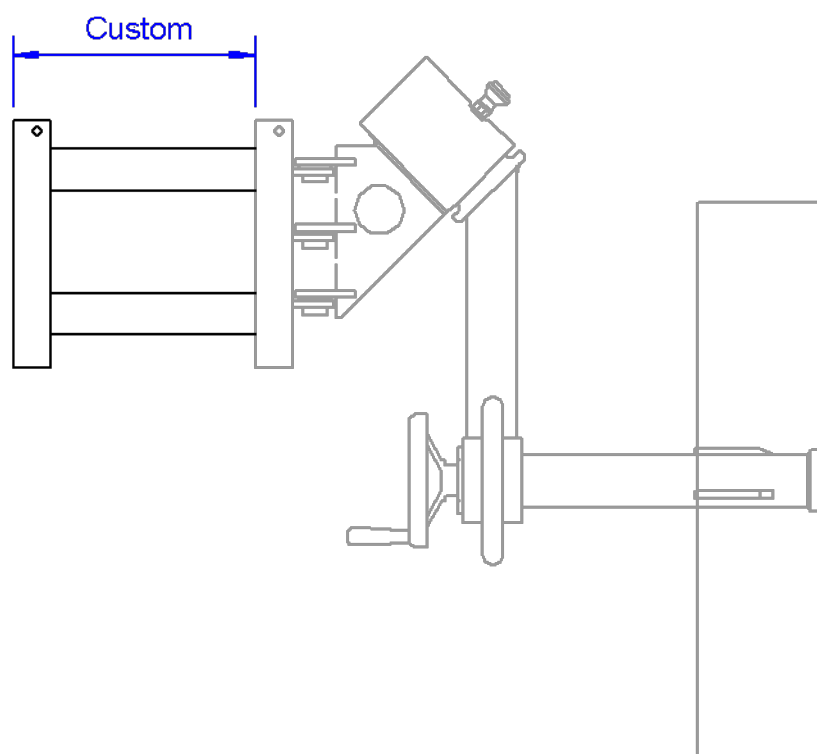


- Easy and Quick to fit and remove - no tools required
- Max 100kg use.
- Nylon construction

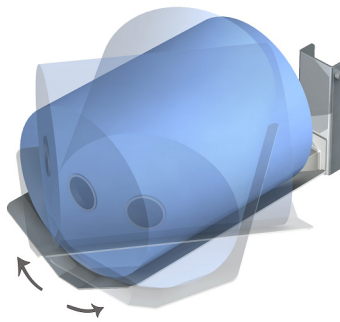
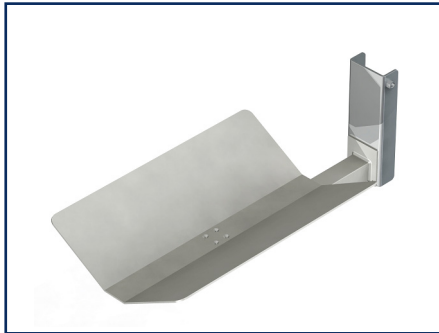


# Mount extension

Ref. FA1310

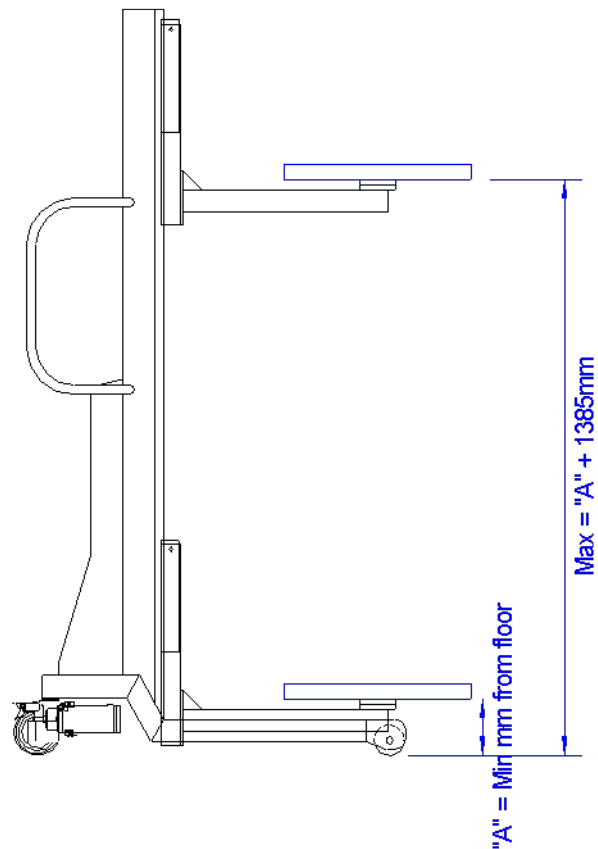
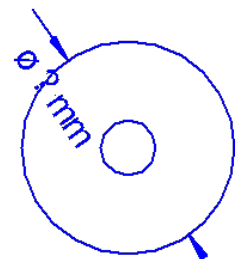
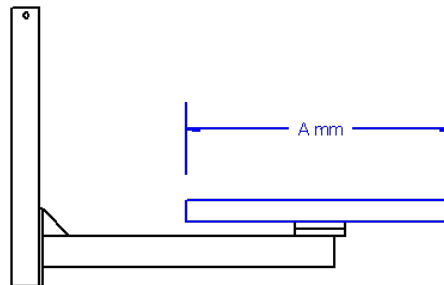
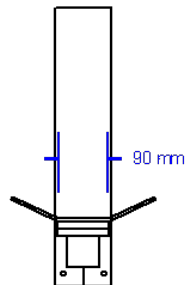


**Ref. FA1150**



- V-Bed Rotates
- Bed Length "A" to suit Roll
- 150kg Max

Dimensions are based  
on the standard  
2000mm tall lifter

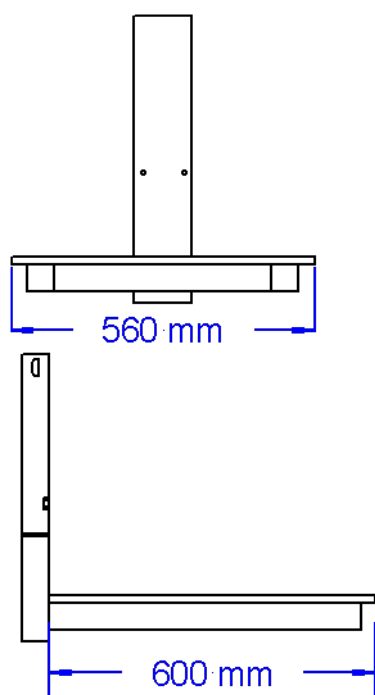


Main Dimensions are for the 2000mm tall lifter.  
Dimensions for the 2200m tall lifter are shown  
in brackets

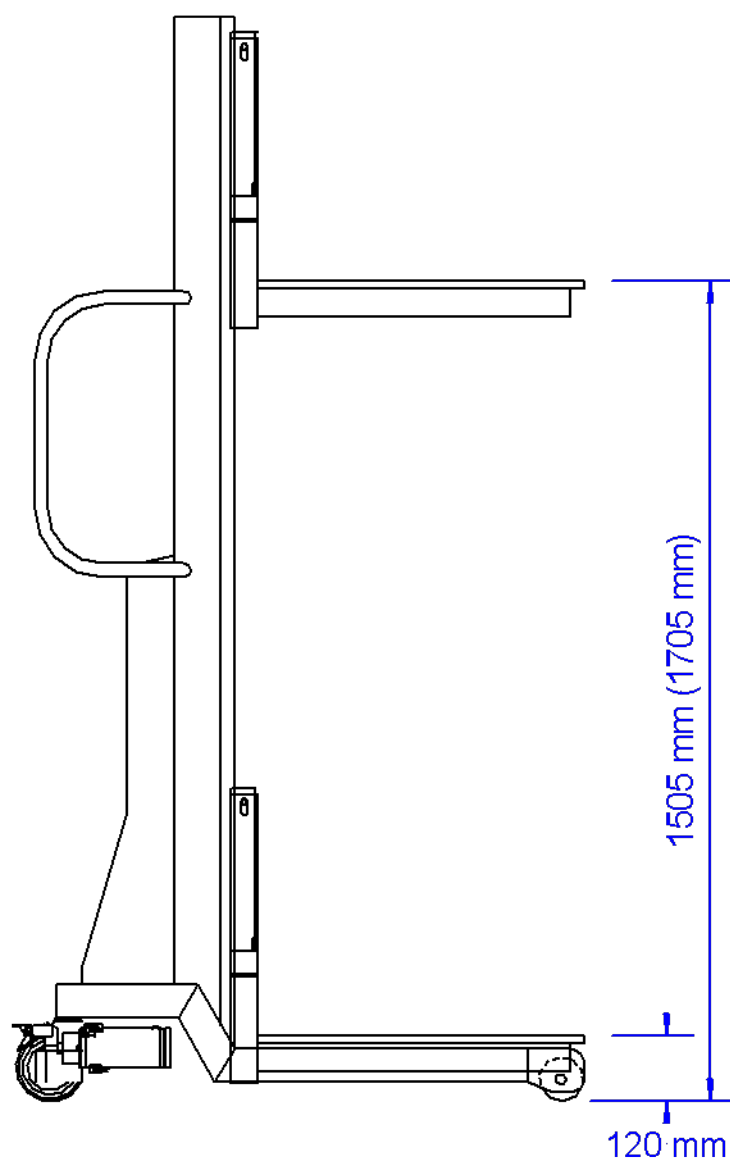


# Platform

Ref. FA1160



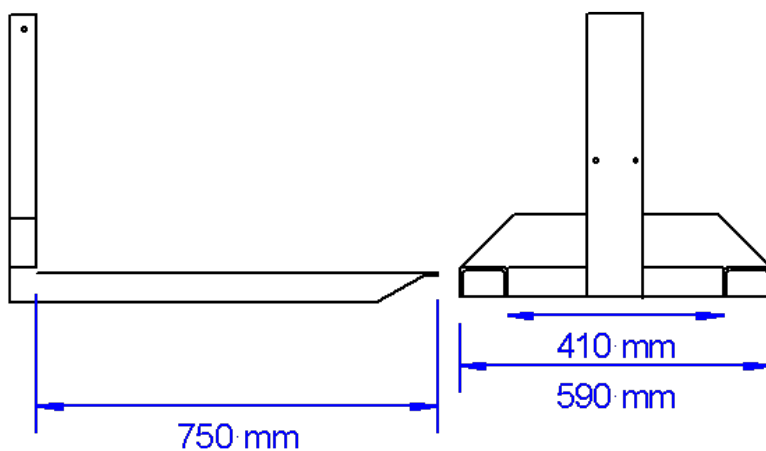
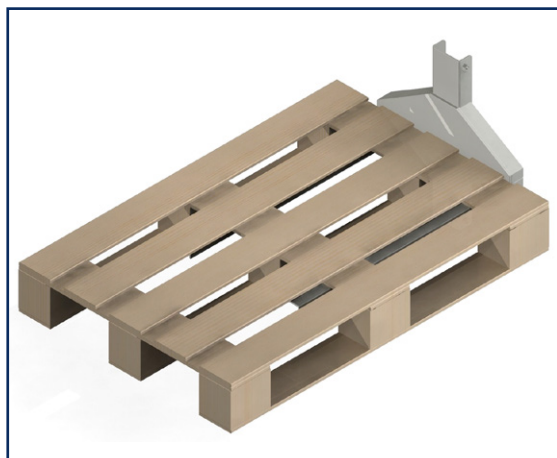
Dimensions are based on the standard 2000mm tall lifter



Main Dimensions are for the 2000mm tall lifter.  
Dimensions for the 2200m tall lifter are shown in brackets

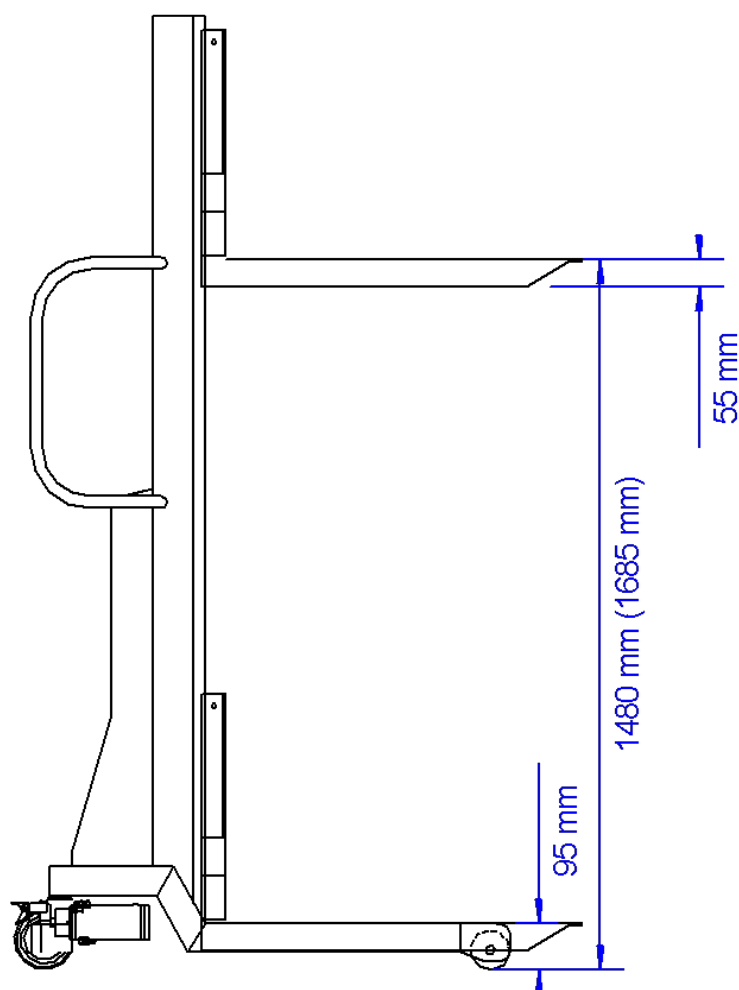
Tel: (+34) 93 635 61 20 - [info@vinca.es](mailto:info@vinca.es) - [www.vinca.es](http://www.vinca.es)

**Ref. FA1170**



Dimensions are based on the standard 2000mm tall lifter

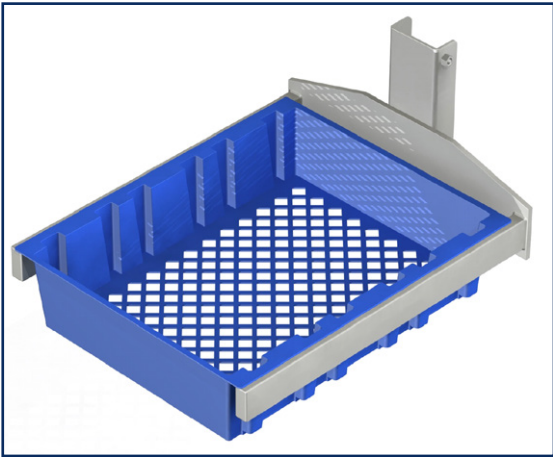
Model	Capacity	Material	Weight
Twin Arm	300 Kg.	Inox	15 Kg.



Main Dimensions are for the 2000mm tall lifter.  
Dimensions for the 2200m tall lifter are shown  
in brackets

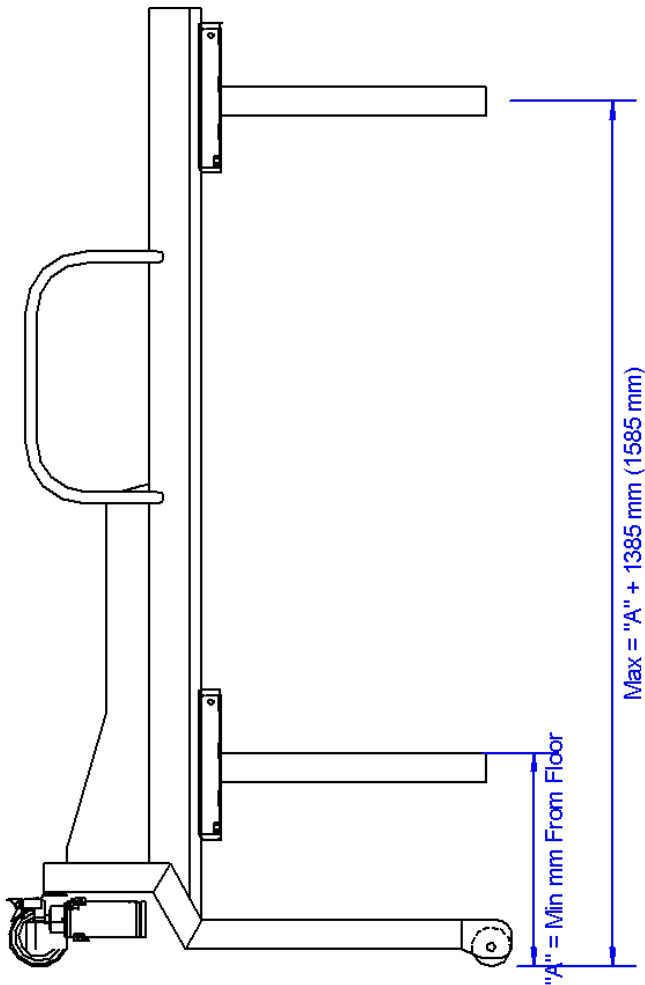
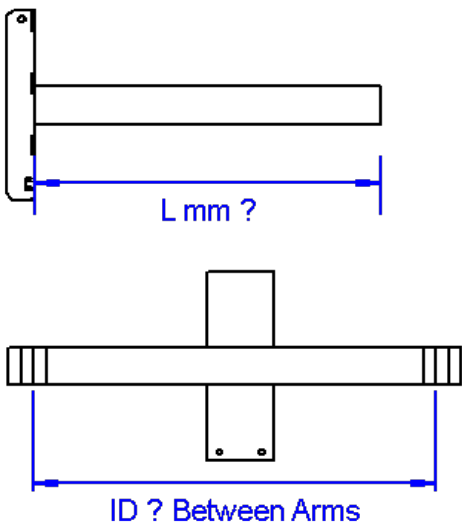
# Crate forks

Ref. FA1180



This tool is made to suit. Lets us know the dimensions you require.

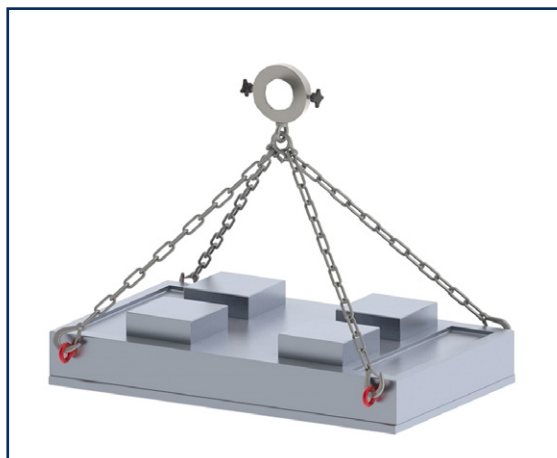
Model	Capacity	Material	Weight
Dimensions to suit	150 Kg.	Inox	15 Kg.



Main Dimensions are for the 2000mm tall lifter.  
Dimensions for the 2200m tall lifter are shown  
in brackets

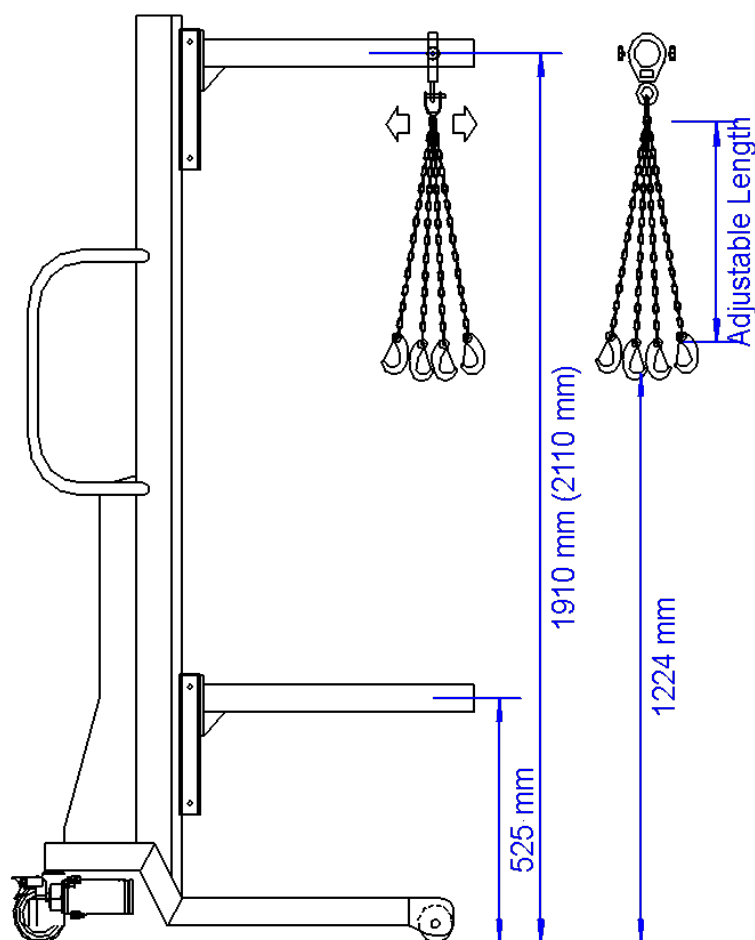
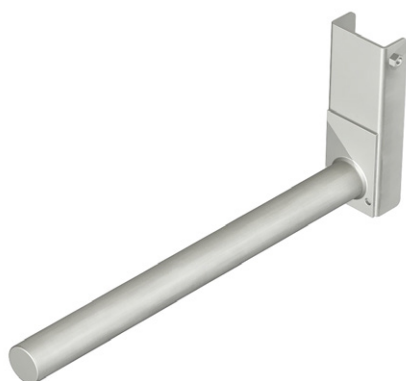
Tel: (+34) 93 635 61 20 - [info@vinca.es](mailto:info@vinca.es) - [www.vinca.es](http://www.vinca.es)

**Ref. FA1190**



The Collar and Chains must be fitted onto Single Arm FA1100.

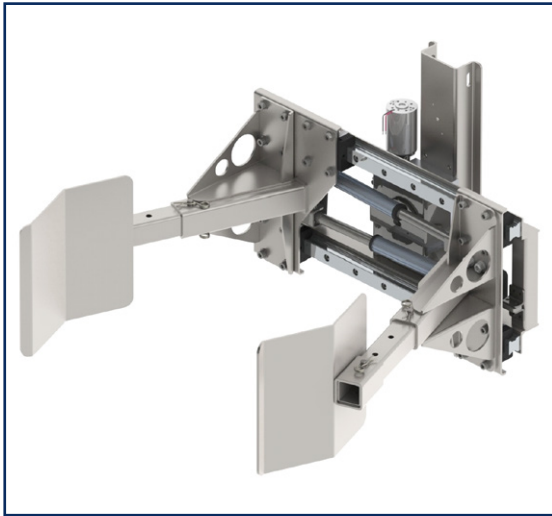
Capacity	Material	Weight
150 Kg.	Inox	7 Kg.



Main Dimensions are for the 2000mm tall lifter.  
Dimensions for the 2200m tall lifter are shown  
in brackets

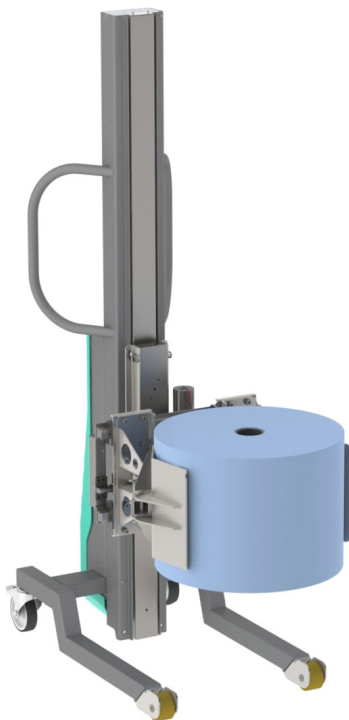
# Powered clamp

**Ref. FA1200**



Clamp with Linear Arm Movement grips all shapes and sizes

1. Powered Grip from 2000N actuators
2. Precision Powered Rotation from our own Worm Drive gearbox
3. 150 kg Powered Capacity
4. Stainless or Mild Steel construction
5. Standard Stroke 300mm.
6. Adjustable Arms give further range
7. Stainless Steel Construction
8. Not recommended for wet areas



For technical data go to page 2.

There are 3 lengths of arm:

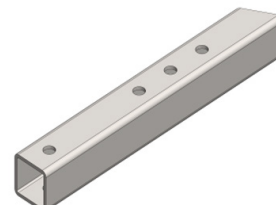
**280 mm.**



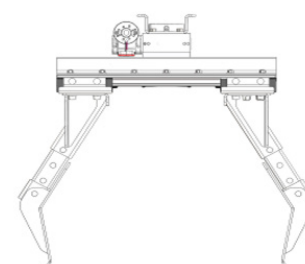
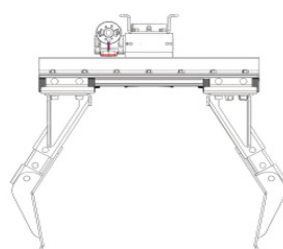
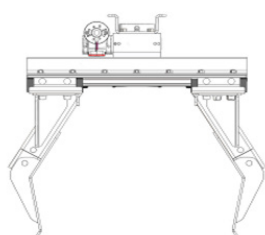
**330 mm.**



**380 mm.**



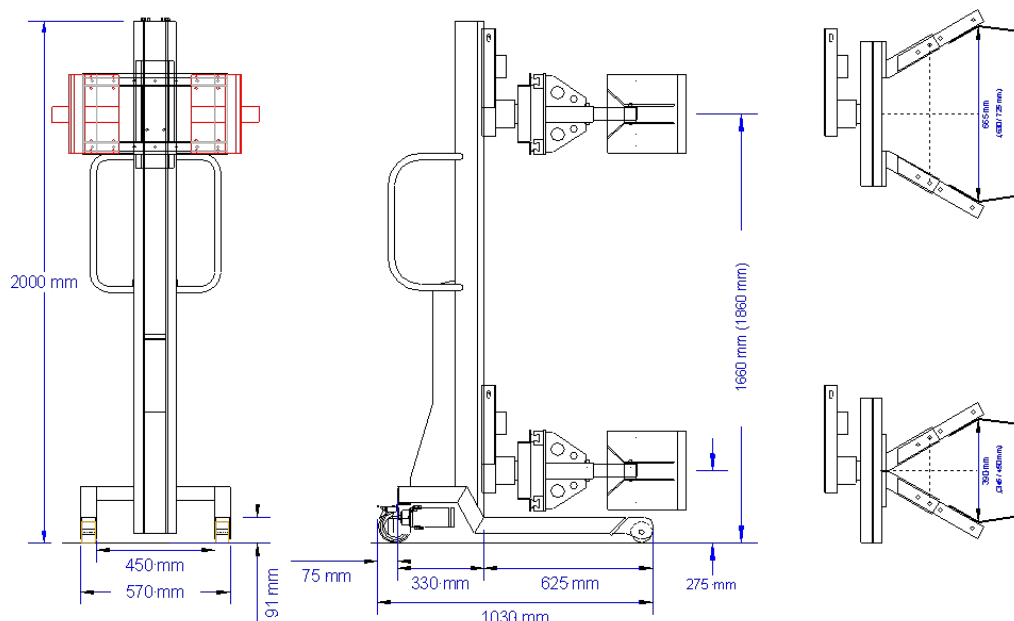
By changing the Pin position, each arm has 3 different positions:



The Clamping Ranges for each Arm, in each of the 3 Pin Positions is shown in the table:

The shortest Arm, gives positions 1-3, the middle Arm gives positions 2-4 and the longest, positions 3-5.

Position	Load Centre	Max Load	Min Roll	Max Roll	Max Jaw Opening
1	316 mm.	190 Kg.	Ø 250	Ø 450	475 mm.
2	361 mm.	168 Kg.	Ø 300	Ø 500	525 mm.
3	409 mm.	146 Kg.	Ø 350	Ø 550	575 mm.
4	457 mm.	124 Kg.	Ø 400	Ø 600	625 mm.
5	505 mm.	102 Kg.	Ø 450	Ø 650	675 mm.

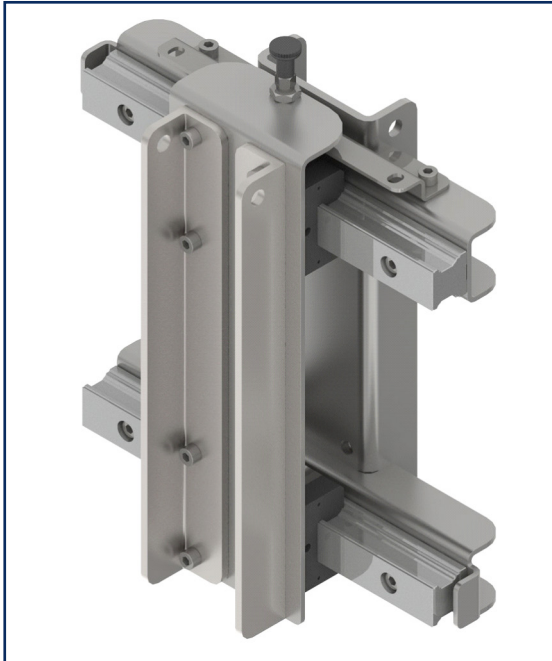


Main Dimensions are for the 2000mm tall lifter. Dimensions for the 2200m tall lifter are shown in brackets



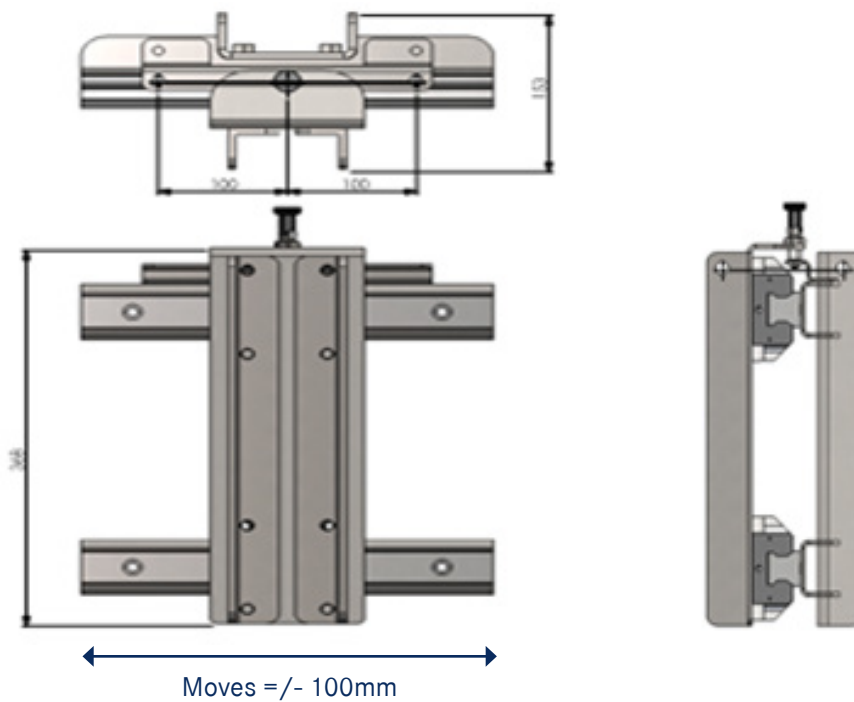
# Linear side shift

**Ref. FA1300**



Retrofits directly onto any lifter. Does not affect Min/Mac lift height.

- 150kg Max
- Construction Stainless Steel



## VINCA products

- Bridges crane and gantry cranes
- Jib cranes
- Hoists and winches
- Scissor Tables and scissor lifts
- Elevators/Lifts for loads (PLT)
- Dock levelers
- Moving Dock levelers (RMC)
- Coats Furniture
- Wheel-lok (Vehicle Immobilizer)
- Safety equipment for docks
- Vacuum lifters VACU-LIFT
- Industrial Manipulators
- Pallet Inverters /Tippers
- Levelers NIVELMATIC
- Tilters inclinators
- Skips
- Industrial fans
- Industrial flexible doors, high speed doors
- Cold storage doors
- Fire doors
- Safety gates DOK-GUARDIAN
- Festoon for mobile equipment
- Lifting appliances
- Industrial Radio Controls
- After Sales Service for above equipment

Ⓔ ATEX classified equipment as option.



### BARCELONA

Tel 93 635 61 20  
Fax 93 635 61 30  
info@vinca.es

### MADRID

Tel: (+34) 616 91 69 82  
madrid@vinca.es

### VALENCIA

Tel: (+34) 647 817 537  
valencia@vinca.es

### GALICIA

Tel: (+34) 648 923 832  
galicia@vinca.es

C/ Técnica, 39  
Pol. Ind. Torre Bovera  
08740 St. Andreu de la Barca  
BARCELONA  
[www.vinca.es](http://www.vinca.es)

